



WiFix

Antennas connecting the world



WiFix DM727X8 4G | LTE | PTP | PMP | ANTENNA

WiFix DM727X8 is a high quality dual X polarity directional panel antenna with **8dbi** gain, designed to accommodate devices at MIMO 2x2. The antenna is engineered for 4G|LTE applications, as well as PTP (Point-to-Point) and PMP (Point-to-Multipoint) as a client antenna.

The **DM727X8** is wide band antenna and operates in the *700MHz to 2700MHz* frequency range, covering the majority of LTE FDD/TDD Bands, Bluetooth, RFID, ISM and WLAN 2.4GHz (802.11 b/g/n).



The **WiFix** is suitable for both indoor and outdoor installations using our **WiSecure** mounting system. The antenna is configured with two external N type Female connectors, and integrated within our supreme quality **WiFix Medium** enclosure system.



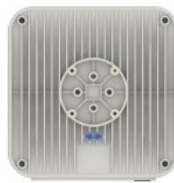
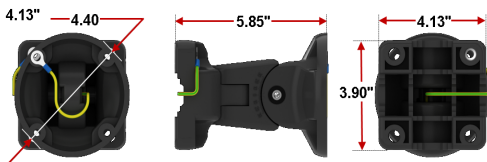
Applications

LTE Bands	1, 2, 3, 4, 5, 6, 7, 8, 9, 10, 12, 13, 14, 17, 18, 19, 20, 23, 25, 26, 27, 28, 33, 34, 35, 36, 37, 38, 39, 40, 41, 44, 2305-2360
WLAN	2.4 GHz
WiMAX	2.3GHz, 2.5GHz, 700MHz
RFID	2400 - 2483 MHz, 865 - 868 MHz, 902 - 928 MHz
Bluetooth	2400-2483 MHz
ISM	2400-2483 MHz, 868-870 MHz



Mechanical specifications

Dimensions	10.71 x 10.87 x 3.78 inch
Weight	5.5 lbs
Connectors	2 x N Female
Material	ABS



WiSecure Mounting System

Dimensions	3.9 x 4.13 x 5.83 inch
Regulation Range	+/- 30°
Weight	1.92 lbs
Mast Dimensions Range	< 2.5 inch
Material	Polyamide with fiberglass with galvanized steel U-Bolts



Electrical specifications

Frequency	.7 GHz - 2.7 GHz
Gain	7dBi ±1
VSWR	< 1.6 -1.7 <2.00
Beamwidth	70°/70° +/-15°
Polarization	X
Cross-Polar	Isolation
Front-to-Back	> 10 dB
Separation between Connectors	> 20 dB
Impedance	50 Ω
Max Input Power	50 W
Lightening Protection	No
DC Ground	No